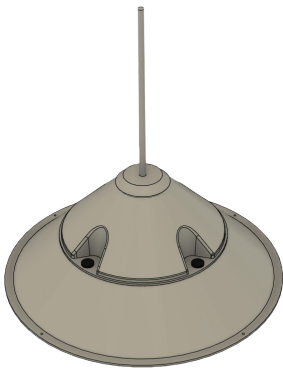


RAPTOR GUARD™ POLE TOP CAP PERCHING EXCLUDERS



**POLE TOP CAPS ISOLATE DANGEROUS ENERGIZED AREAS
AND REDUCE BIRDS OF PREY FROM USING STRUCTURES
AS HUNTING PERCHES.**



BLUNT-TIPPED SPIKES DETERS PERCHING, AS PROVEN BY LIVE FLIGHT
CAGE RAPTOR TESTS CONDUCTED IN COLLABORATION WITH THE ROCKY
MOUNTAIN RAPTOR PROGRAM

ENGINEERED TO MAINTAIN STRUCTURAL INTEGRITY UNDER EXTREME
ENVIRONMENTAL CONDITIONS FOR DECADES

DURABILITY AND EFFECTIVENESS HAS BEEN HIGHLIGHTED DURING PILOT
PROGRAMS BY THE WASHINGTON STATE FISH AND WILDLIFE AND THE
BUREAU OF LAND MANAGEMENT

CAN BE INSTALLED ON WOOD, STEEL OR COMPOSITE



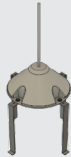
SYSTEM RELIABILITY SOLUTIONS
POWERLINESENTRY.COM // SALES@POWERLINESENTRY.COM // 970.599.1050



RAPTOR GUARD™ POLE TOP CAP PERCHING EXCLUDERS



RAPTOR GUARD™ POLE TOP CAP
RGPT-26



RAPTOR GUARD™ POLE TOP CAP
FOR BANDING TO NON-WOOD POLES
CAP SOLD SEPARATELY
RGPT-K

SKU	DIAMETER	RECOMMENDED POLE TOP DIAMETER
RGPT-8	8"	7 - 9"
RGPT-10	10"	9 - 11"
RGPT-12	12"	11 - 13"
RGPT-14 *	14"	13 - 15"
RGPT-16 *	16"	15 - 17"
RGPT-18 *	18"	17 - 19"
RGPT-20 *	20"	19 - 21"
RGPT-22 *	22"	21 - 23"
RGPT-24 *	24"	23 - 25"
RGPT-26 *	26"	25 - 27"
RGPT-28 *	28"	27 - 29"
RGPT-30 *	30"	29 - 31"
RGPT-32 *	32"	31 - 33"
RGPT-34 *	34"	33 - 35"
RGPT-36 *	36"	35 - 37"
RGPT-38 *	38"	37 - 39"
RGPT-40 *	40"	39 - 41"
RGPT-42 *	42"	41 - 43"
RGPT-K	ADAPTER KIT FOR BANDING TO NON-WOOD POLE	

* INCLUDES ADAPTER KIT FOR BANDING TO NON-WOOD POLES

TESTS	RESULTS
ASTM D-638 TENSILE STRENGTH	70,000 PSI
ASTM D-695 COMPRESSIVE STRENGTH	20,000 PSI
ASTM D-149 DIELECTRIC STRENGTH	50KV/IN

