

BIRD FLIGHT DIVERTER

HOTSTICK INSTALLATION



SUPPLIES

- Bird Flight Diverter, BFD-050 featured here
- Bird Flight Diverter Attachment Tool, BFD-050-075-AT featured here, not included
- Hotstick, not included



BFD-050

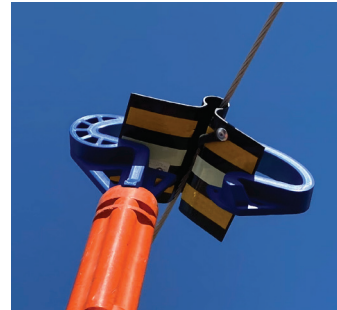
INSTRUCTIONS



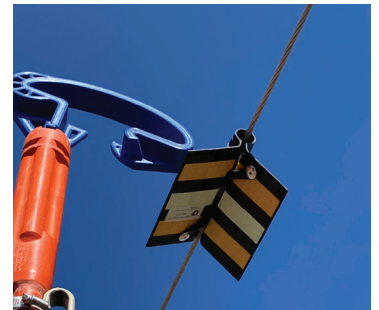
Install the attachment tool on the hotstick. Flex open the bird flight diverter and slide it into the attachment tool.



Position the bird flight diverter over the wire.



Pull the hotstick in a downwards motion until the bird flight diverter snaps into place over the wire.



Slide the attachment tool sideways off of the bird flight diverter.

VIDEO TUTORIAL

Scan the QR code to see a quick video of a live install >

Or visit powerlinesentry.com/install-support for a full library of support materials.



TRUE POWER RELIABILITY DEMANDS EFFECTIVE WILDLIFE PROTECTION
[POWERLINESENTRY.COM](https://powerlinesentry.com) | [INFO@POWERLINESENTRY.COM](mailto:info@powerlinesentry.com) | 970.599.1050